

\$310,500 - 4510 Leawood Drive, Papillion

MLS® #21920218

\$310,500

4 Bedroom, 3.00 Bathroom, 2,446 sqft
Residential

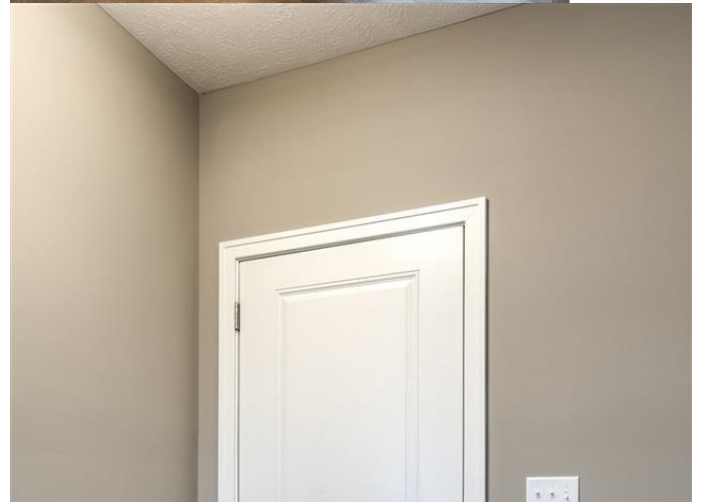
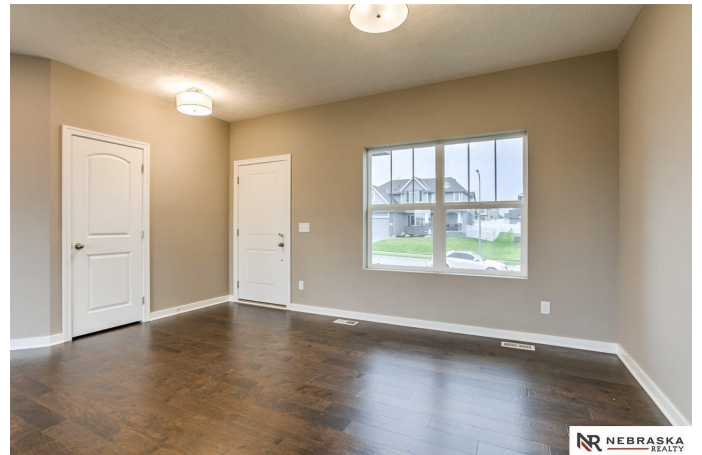
Belle Lago, Papillion, NE

The Home Company "Ellison" with 4 bedrooms, 3 baths, 3 car garage. 2,446 square feet of open efficient space. Large windows in great room. Large drop zone off garage. Open kitchen with hidden pantry, stainless appliances, mantle & stone fireplace, tiled master bath with tiled shower. A back staircase to the second floor is what gives the main living space a wide open concept. New 2nd floor layout creates open feel and additional closet space. Dual vanities in both 2nd floor baths. Passive radon and sprinkler included. All measurements approximate. Model @ 4611 Lawnwood Drive in Belle Lago (Malibu Ranch) hours Wed - Sun 1-5 pm or by appointment. Additional models at 7850 S 193rd St. in Remington Ridge (Santa Clara 2 Sty) and 7304 N 168th Ave in Anchor Pointe (Edison 2 Sty). Hours Wed - Sun 1-5 pm or by appointment. Photos of similar home and home under construction.

Built in 2019

Essential Information

MLS® #	21920218
Price	\$310,500
Bedrooms	4
Bathrooms	3.00
Square Footage	2,446
Year Built	2019
Type	Residential



Sub-Type	Detached Housing
Style	2 Story
Status	Active

Community Information

Address	4510 Leawood Drive
Area	Sarpy County
Subdivision	Belle Lago
City	Papillion
State	NE
Zip Code	68133

Amenities

# of Garages	2
Garages	Attached

Interior

Interior Features	9'+ Ceiling, Two Story Entry
Appliances	Range, Oven, Dishwasher, Disposal, Microwave
Heating	Forced Air
Cooling	Central Air
Fireplace	Yes
# of Fireplaces	1

Exterior

Exterior Features	Patio, Sprinkler System
Roof	Composition
Construction	Under Construction

School Information

District	Bellevue
Elementary	Two Springs
Middle	Lewis and Clark
High	Bellevue East

Additional Information

Date Listed	August 30th, 2019
Days on Market	97

Listing Details

Listing Office

Nebraska Realty Sarpy County

Listing information is provided by Participants of the Midland MLS & Great Plains Regional Multiple Listing Service Inc. IDX program and is for consumers' personal, non-commercial use and may not be used for any purpose other than to identify prospective properties consumers may be interested in purchasing; The information is deemed reliable but is not guaranteed accurate. Copyright, 2019, Midland MLS & Great Plains REALTORS® Multiple Listing Service, Inc. Listing information last updated on December 6th, 2019 at 5:15pm CST