

\$589,000 - 9344 West Center Road, Omaha

MLS® #21923261

\$589,000

2 Bedroom, 4.00 Bathroom, 5,188 sqft
Residential

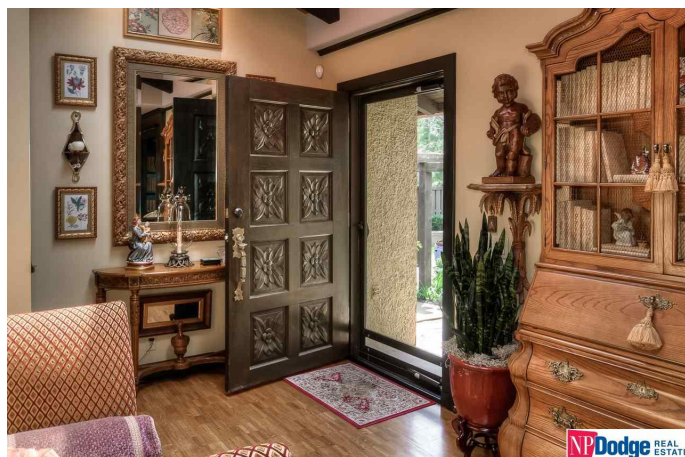
Timberlane Estates, Omaha, NE

Incredible District 66 Ranch! Interior Designers personal home. Words can't fully describe the quality and detail of this home. Impressive foyer with wet bar. Fantastic kitchen with gas cook top, double ovens, and the detail to the custom cabinets is extraordinary. Large great room with vaulted ceilings. Wonderful Master with large spa bath and steam shower. Wool carpeting, custom mill-work, no detail was missed. The landscaping and gardens are beautifully maintained and there is a fully functioning greenhouse. The deck off the living room is 12"x 22" and has custom tempered glass and metal rails to take advantage of the view to the park and pond below. New roof. Lower level has been finished for the owners business and they currently have a special use permit.

Built in 1978

Essential Information

MLS® #	21923261
Price	\$589,000
Bedrooms	2
Bathrooms	4.00
Square Footage	5,188
Year Built	1978
Type	Residential
Sub-Type	Detached Housing
Style	Ranch



Status Active

Community Information

Address 9344 West Center Road
Area Douglas County
Subdivision Timberlane Estates
City Omaha
State NE
Zip Code 68124

Amenities

of Garages 2
Garages Attached

Interior

Interior Features Security System, Cable Available, 9'+ Ceiling, LL Daylight Windows, Ceiling Fan, Garage Door Opener, Whirlpool, 2nd Kitchen, Formal Dining Room, Skylight, Elect. Air Filters, Exercise Room
Appliances Refrigerator, Dishwasher, Disposal, Microwave, Double Oven, Warming Oven, Icemaker, Convection Oven, Cooktop
Heating Forced Air, Heat Pump
Cooling Central Air, Heat Pump
Fireplace Yes
of Fireplaces 2

Exterior

Exterior Features Porch, Patio, Deck/Balcony, Sprinkler System, Extra Parking Slab, Enclosed Patio, Decorative Lighting
Lot Description In City, Corner Lot, In Subdivision, Sloping, Wooded, Pond/Stream on Prop
Roof Composition
Construction Not New and NOT a Model

School Information

District Westside
Elementary Oakdale
Middle Westside
High Westside

Additional Information

Date Listed October 1st, 2019

Days on Market 42

Listing Details

Listing Office NP Dodge RE Sales Inc 108Dodge

Listing information is provided by Participants of the Midland MLS & Great Plains Regional Multiple Listing Service Inc. IDX program and is for consumers' personal, non-commercial use and may not be used for any purpose other than to identify prospective properties consumers may be interested in purchasing; The information is deemed reliable but is not guaranteed accurate. Copyright, 2019, Midland MLS & Great Plains REALTORS® Multiple Listing Service, Inc. Listing information last updated on November 13th, 2019 at 3:31am CST