

\$5,956,177 - 15510 Fairview Road, Springfield

MLS® #22010615

\$5,956,177

Bedroom, Bathroom,
Land on 119 Acres

n/a, Springfield, NE

Development opportunity in the heart of the action in Sarpy County! Located near the Facebook data centers, Travellers, Google, and more with convenient access to I-80 via Highway 50 and Platteview Road. It is also conveniently located near planned sewer line and lift station. Topographical, soil, endangered species and additional due diligence reports available by request for serious inquiries only.

Essential Information

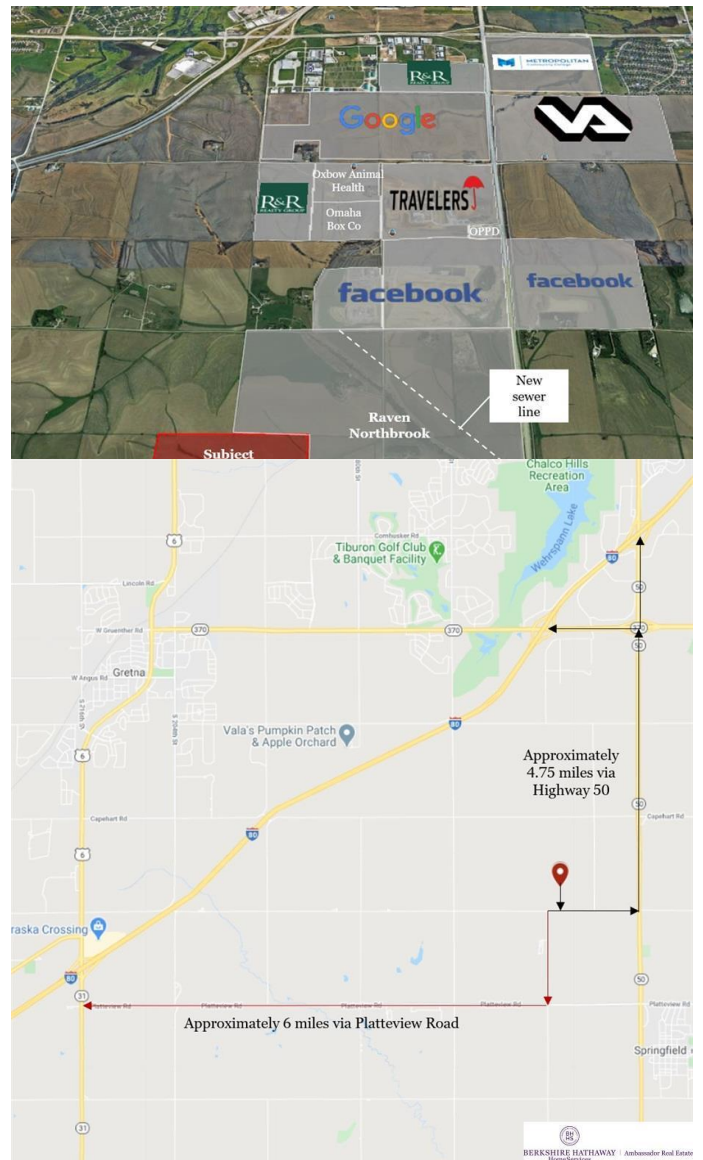
MLS® #	22010615
Price	\$5,956,177
Acres	118.90
Type	Land
Sub-Type	Farms/Ranches
Status	Active

Community Information

Address	15510 Fairview Road
Area	Sarpy County
Subdivision	n/a
City	Springfield
State	NE
Zip Code	68059

Amenities

Utilities	Electric, Telephone
-----------	---------------------



School Information

District	Springfield Platteview
Elementary	Springfield
Middle	Platteview Central
High	Platteview

Additional Information

Date Listed	March 15th, 2017
Days on Market	1648

Listing Details

Listing Office	BHHS Ambassador Real Estate
----------------	-----------------------------

Listing information is provided by Participants of the Midland MLS & Great Plains Regional Multiple Listing Service Inc. IDX program and is for consumers' personal, non-commercial use and may not be used for any purpose other than to identify prospective properties consumers may be interested in purchasing; The information is deemed reliable but is not guaranteed accurate. Copyright, 2021, Midland MLS & Great Plains REALTORS® Multiple Listing Service, Inc. Listing information last updated on September 18th, 2021 at 2:00pm CDT